



50% Annual Chance Event
 Study Basin
 Chatham County Line
 Effingham County Line

0 600 1,200 2,400 3,600 4,800 6,000
 1 inch = 1,600 feet

Job Number: 22965.0001	Produced 09/22/2023	Produced By: RMH	Modified: 10/9/2023	Modified By: RMH
File: Z:\22965.0001\GIS\Match\Exhibits\Floodplain\Exhibits\22965.0001 - Floodplain Working Exhibit 01.mxd; Vertical Datum: NAVD83				
Thomas & Hutton compiled the map information from the following sources:				
Data	Source	Date		
Study Basin	Thomas & Hutton	2022/2023		
Floodplain	Thomas & Hutton	2022/2023		
Aerial Imagery	Google Earth	2022		

DISCLAIMER
 Where Thomas & Hutton is cited as the data source, the firm has created or verified the data. For all other sources cited, Thomas & Hutton used the data "as is," has made no independent investigation of the data, and makes no representation as to the accuracy or completeness of the data. Please see each source for available documentation of its respective datasets.
 Copyright © 2018 by Thomas & Hutton.
 No part of this document may be reproduced without written permission from an officer of Thomas & Hutton.

50% Annual Chance Event Inundation Exhibit A Chatham County, Georgia

West Chatham Regional Watershed Study



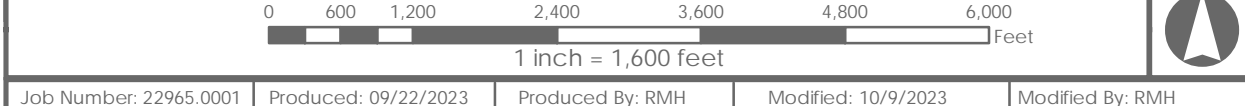
50 PARK OF COMMERCE WAY
 SAVANNAH, GA 31405 • 912.234.5300
 WWW.THOMASANDHUTTON.COM

GEOGRAPHIC INFORMATION SYSTEMS

COPYRIGHT © 2020 THOMAS & HUTTON



50% Annual Chance Event
 Study Basin
 Chatham County Line
 Effingham County Line



Job Number: 22965.0001	Produced: 09/22/2023	Produced By: RMH	Modified: 10/9/2023	Modified By: RMH
File: Z:\22965.0001\GIS\Misc\Exhibits\Floodplain\Exhibits\22965.0001 - Floodplain Working Exhibit 02.mxd Vertical Datum: NAVD83				
Thomas & Hutton compiled the map information from the following sources:				
Data	Source	Date		
Study Basin	Thomas & Hutton	2022/2023		
Floodplain	Thomas & Hutton	2022/2023		
Aerial Imagery	Google Earth	2022		

DISCLAIMER
 Where Thomas & Hutton is cited as the data source, the firm has created or verified the data. For all other sources cited, Thomas & Hutton used the data "as is," has made no independent investigation of the data, and makes no representation as to the accuracy or completeness of the data. Please see each source for available documentation of its respective datasets.
 Copyright © 2018 by Thomas & Hutton.
 No part of this document may be reproduced without written permission from an officer of Thomas & Hutton.

50% Annual Chance Event Inundation Exhibit B Chatham County, Georgia West Chatham Regional Watershed Study



50 PARK OF COMMERCE WAY
 SAVANNAH, GA 31405 • 912.234.5300
 WWW.THOMASANDHUTTON.COM

GEOGRAPHIC INFORMATION SYSTEMS
 COPYRIGHT © 2020 THOMAS & HUTTON



50% Annual Chance Event
 Study Basin
 Chatham County Line
 Effingham County Line

0 600 1,200 2,400 3,600 4,800 6,000 Feet
 1 inch = 1,600 feet

Job Number: 22965.0001	Produced: 09/22/2023	Produced By: RMH	Modified: 10/9/2023	Modified By: RMH
File: Z:\22965_22965.0001\GIS\Mech\Exhibits\Floodplain Exhibits\22965.0001 - Floodplain Working Exhibit 03.mxd; Vertical Datum: NAVD83				
Thomas & Hutton compiled the map information from the following sources:				
Data	Source	Date		
Study Basin	Thomas & Hutton	2022/2023		
Floodplain	Thomas & Hutton	2022/2023		
Aerial Imagery	Google Earth	2022		

DISCLAIMER
 Where Thomas & Hutton is cited as the data source, the firm has created or verified the data. For all other sources cited, Thomas & Hutton used the data "as is," has made no independent investigation of the data, and makes no representation as to the accuracy or completeness of the data. Please see each source for available documentation of its respective datasets.
 Copyright © 2018 by Thomas & Hutton.
 No part of this document may be reproduced without written permission from an officer of Thomas & Hutton.

50% Annual Chance Event Inundation Exhibit C Chatham County, Georgia West Chatham Regional Watershed Study



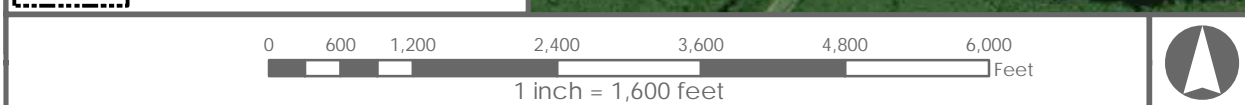
50 PARK OF COMMERCE WAY
 SAVANNAH, GA 31405 • 912.234.5300
 WWW.THOMASANDHUTTON.COM

GEOGRAPHIC INFORMATION SYSTEMS
 COPYRIGHT © 2020 THOMAS & HUTTON

MATCH LINE - SEE INUNDATION MAP - EXHIBIT B



4% Annual Chance Event
 Study Basin
 Chatham County Line
 Effingham County Line



Job Number: 22965.0001	Produced 09/22/2023	Produced By: RMH	Modified: 10/9/2023	Modified By: RMH
File: Z:\22965.0001\GIS\Map\Exhibits\Floodplain\Exhibits\22965.0001 - Floodplain Working Exhibit 01.mxd; Vertical Datum: NAVD83				
Thomas & Hutton compiled the map information from the following sources:				
Data	Source	Date		
Study Basin	Thomas & Hutton	2022/2023		
Floodplain	Thomas & Hutton	2022/2023		
Aerial Imagery	Google Earth	2022		

DISCLAIMER
 Where Thomas & Hutton is cited as the data source, the firm has created or verified the data. For all other sources cited, Thomas & Hutton used the data "as is," has made no independent investigation of the data, and makes no representation as to the accuracy or completeness of the data. Please see each source for available documentation of its respective datasets.
 Copyright © 2018 by Thomas & Hutton.
 No part of this document may be reproduced without written permission from an officer of Thomas & Hutton.

4% Annual Chance Event Inundation Exhibit A Chatham County, Georgia

West Chatham Regional Watershed Study

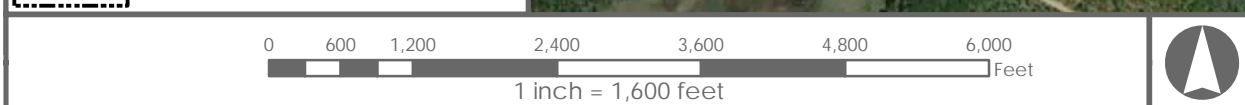
50 PARK OF COMMERCE WAY
 SAVANNAH, GA 31405 • 912.234.5300
 WWW.THOMASANDHUTTON.COM

GEOGRAPHIC INFORMATION SYSTEMS

COPYRIGHT © 2020 THOMAS & HUTTON



4% Annual Chance Event
 Study Basin
 Chatham County Line
 Effingham County Line



Job Number: 22965.0001	Produced: 09/22/2023	Produced By: RMH	Modified: 10/9/2023	Modified By: RMH
File: Z:\22965_22965.0001\GIS\Misc\Exhibits\Floodplain\Exhibits\22965.0001 - Floodplain Working Exhibit 02.mxd; Vertical Datum: NAVD83				
Thomas & Hutton compiled the map information from the following sources:				
Data	Source	Date		
Study Basin	Thomas & Hutton	2022/2023		
Floodplain	Thomas & Hutton	2022/2023		
Aerial Imagery	Google Earth	2022		

DISCLAIMER
 Where Thomas & Hutton is cited as the data source, the firm has created or verified the data. For all other sources cited, Thomas & Hutton used the data "as is," has made no independent investigation of the data, and makes no representation as to the accuracy or completeness of the data. Please see each source for available documentation of its respective datasets.
 Copyright © 2018 by Thomas & Hutton.
 No part of this document may be reproduced without written permission from an officer of Thomas & Hutton.

4% Annual Chance Event Inundation Exhibit B Chatham County, Georgia West Chatham Regional Watershed Study



50 PARK OF COMMERCE WAY
 SAVANNAH, GA 31405 • 912.234.5300
 WWW.THOMASANDHUTTON.COM

GEOGRAPHIC INFORMATION SYSTEMS
 COPYRIGHT © 2020 THOMAS & HUTTON



4% Annual Chance Event
 Study Basin
 Chatham County Line
 Effingham County Line

0 600 1,200 2,400 3,600 4,800 6,000 Feet
 1 inch = 1,600 feet

Job Number: 22965.0001	Produced: 09/22/2023	Produced By: RMH	Modified: 10/9/2023	Modified By: RMH
File: Z:\22965.0001\GIS\Mch\Exhibits\Floodplain\Exhibits\22965.0001 - Floodplain Working Exhibit 03.mxd; Vertical Datum: NAVD83				
Thomas & Hutton compiled the map information from the following sources:				
Data	Source	Date		
Study Basin	Thomas & Hutton	2022/2023		
Floodplain	Thomas & Hutton	2022/2023		
Aerial Imagery	Google Earth	2022		

DISCLAIMER
 Where Thomas & Hutton is cited as the data source, the firm has created or verified the data. For all other sources cited, Thomas & Hutton used the data "as is," has made no independent investigation of the data, and makes no representation as to the accuracy or completeness of the data. Please see each source for available documentation of its respective datasets.
 Copyright © 2018 by Thomas & Hutton.
 No part of this document may be reproduced without written permission from an officer of Thomas & Hutton.

4% Annual Chance Event Inundation Exhibit C Chatham County, Georgia West Chatham Regional Watershed Study

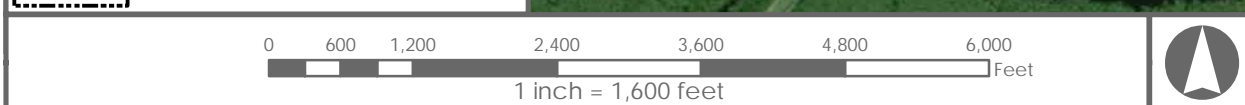


50 PARK OF COMMERCE WAY
 SAVANNAH, GA 31405 • 912.234.5300
 WWW.THOMASANDHUTTON.COM

GEOGRAPHIC INFORMATION SYSTEMS
 COPYRIGHT © 2020 THOMAS & HUTTON



1% Annual Chance Event
 Study Basin
 Chatham County Line
 Effingham County Line



Job Number: 22965.0001	Produced 09/22/2023	Produced By: RMH	Modified: 10/9/2023	Modified By: RMH
File: Z:\22965\22965.0001\GIS\Map\Exhibits\Floodplain\Exhibits\22965.0001 - Floodplain Working Exhibit 01.mxd; Vertical Datum: NAVD88				
Thomas & Hutton compiled the map information from the following sources:				
Data	Source	Date		
Study Basin	Thomas & Hutton	2022/2023		
Floodplain	Thomas & Hutton	2022/2023		
Aerial Imagery	Google Earth	2022		

DISCLAIMER
 Where Thomas & Hutton is cited as the data source, the firm has created or verified the data. For all other sources cited, Thomas & Hutton used the data "as is," has made no independent investigation of the data, and makes no representation as to the accuracy or completeness of the data. Please see each source for available documentation of its respective datasets.
 Copyright © 2018 by Thomas & Hutton.
 No part of this document may be reproduced without written permission from an officer of Thomas & Hutton.

1% Annual Chance Event Inundation Exhibit A Chatham County, Georgia

West Chatham Regional Watershed Study

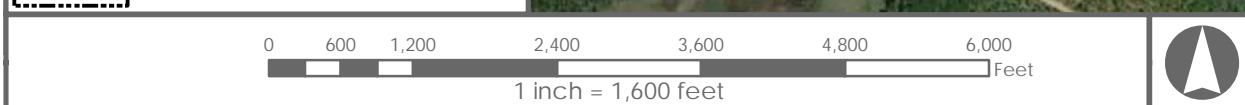


50 PARK OF COMMERCE WAY
 SAVANNAH, GA 31405 • 912.234.5300
 WWW.THOMASANDHUTTON.COM

GEOGRAPHIC INFORMATION SYSTEMS
 COPYRIGHT © 2020 THOMAS & HUTTON



■ 1% Annual Chance Event
 Study Basin
 Chatham County Line
 Effingham County Line



Job Number: 22965.0001	Produced: 09/22/2023	Produced By: RMH	Modified: 10/9/2023	Modified By: RMH
File: Z:\22965.0001\GIS\Misc\Exhibits\Floodplain Exhibits\22965.0001 - Floodplain Working Exhibit 02.mxd Vertical Datum: NAVD88				
Thomas & Hutton compiled the map information from the following sources:				
Data	Source	Date		
Study Basin	Thomas & Hutton	2022/2023		
Floodplain	Thomas & Hutton	2022/2023		
Aerial Imagery	Google Earth	2022		

DISCLAIMER
 Where Thomas & Hutton is cited as the data source, the firm has created or verified the data. For all other sources cited, Thomas & Hutton used the data "as is," has made no independent investigation of the data, and makes no representation as to the accuracy or completeness of the data. Please see each source for available documentation of its respective datasets.
 Copyright © 2018 by Thomas & Hutton.
 No part of this document may be reproduced without written permission from an officer of Thomas & Hutton.

1% Annual Chance Event Inundation Exhibit B

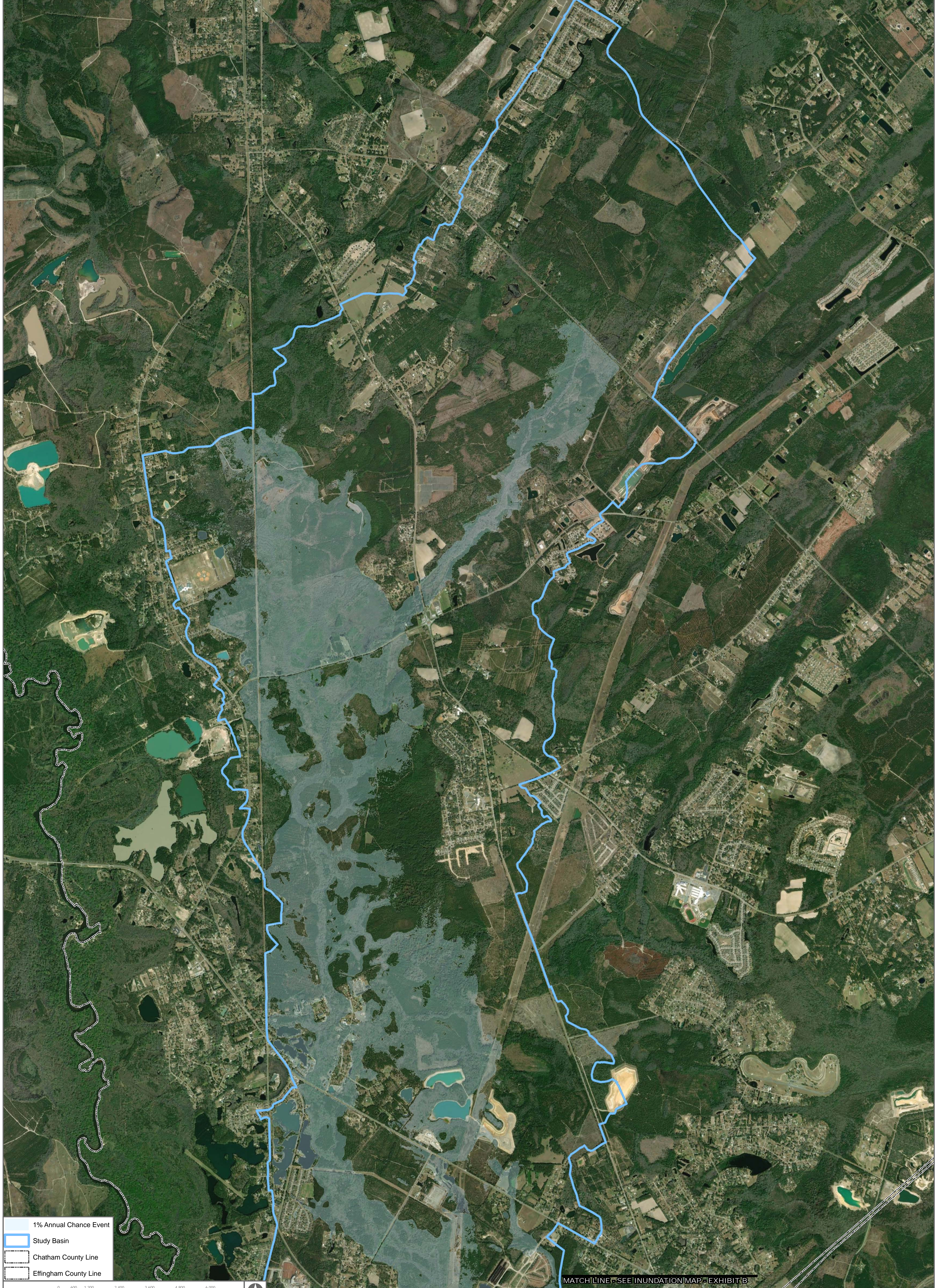
Chatham County, Georgia

West Chatham Regional Watershed Study



50 PARK OF COMMERCE WAY
 SAVANNAH, GA 31405 • 912.234.5300
 WWW.THOMASANDHUTTON.COM

GEOGRAPHIC INFORMATION SYSTEMS
 COPYRIGHT © 2020 THOMAS & HUTTON



- 1% Annual Chance Event
- Study Basin
- Chatham County Line
- Effingham County Line

0 600 1,200 2,400 3,600 4,800 6,000 Feet
 1 inch = 1,600 feet

Job Number: 22965.0001	Produced: 09/22/2023	Produced By: RMH	Modified: 10/9/2023	Modified By: RMH
File: Z:\22965_22965.0001\GIS\Mch\Exhibits\Floodplain\Exhibits\22965.0001 - Floodplain Working Exhibit 03.mxd; Vertical Datum: NAVD83				
Thomas & Hutton compiled the map information from the following sources:				
Data	Source	Date		
Study Basin	Thomas & Hutton	2022/2023		
Floodplain	Thomas & Hutton	2022/2023		
Aerial Imagery	Google Earth	2022		

DISCLAIMER
 Where Thomas & Hutton is cited as the data source, the firm has created or verified the data. For all other sources cited, Thomas & Hutton used the data "as is," has made no independent investigation of the data, and makes no representation as to the accuracy or completeness of the data. Please see each source for available documentation of its respective datasets.
 Copyright © 2018 by Thomas & Hutton.
 No part of this document may be reproduced without written permission from an officer of Thomas & Hutton.

MATCH LINE - SEE INUNDATION MAP - EXHIBIT B

1% Annual Chance Event Inundation Exhibit C Chatham County, Georgia West Chatham Regional Watershed Study



50 PARK OF COMMERCE WAY
 SAVANNAH, GA 31405 • 912.234.5300
 WWW.THOMASANDHUTTON.COM

GEOGRAPHIC INFORMATION SYSTEMS

COPYRIGHT © 2020 THOMAS & HUTTON

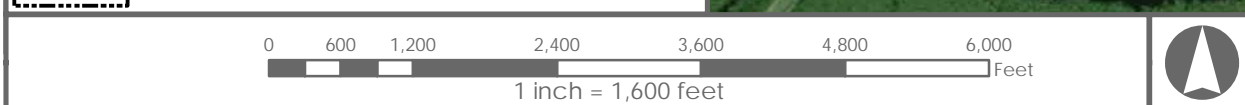


1% +1.41ft SLR Annual Chance Event

Study Basin

Chatham County Line

Effingham County Line



Job Number: 22965.0001	Produced 09/22/2023	Produced By: RMH	Modified: 10/9/2023	Modified By: RMH
File: Z:\22965\22965.0001\GIS\Map\Exhibits\Floodplain\Exhibits\22965.0001 - Floodplain Working Exhibit 01.mxd; Vertical Datum: NAVD88				
Thomas & Hutton compiled the map information from the following sources:				
Data	Source	Date		
Study Basin	Thomas & Hutton	2022/2023		
Floodplain	Thomas & Hutton	2022/2023		
Aerial Imagery	Google Earth	2022		

DISCLAIMER
 Where Thomas & Hutton is cited as the data source, the firm has created or verified the data. For all other sources cited, Thomas & Hutton used the data "as is," has made no independent investigation of the data, and makes no representation as to the accuracy or completeness of the data. Please see each source for available documentation of its respective datasets.
 Copyright © 2018 by Thomas & Hutton.
 No part of this document may be reproduced without written permission from an officer of Thomas & Hutton.

1% +1.41ft Sea Level Rise (SLR) Annual Chance Event Inundation Exhibit A Chatham County, Georgia West Chatham Regional Watershed Study



THOMAS & HUTTON

50 PARK OF COMMERCE WAY
 SAVANNAH, GA 31405 • 912.234.5300
 WWW.THOMASANDHUTTON.COM

GEOGRAPHIC INFORMATION SYSTEMS

COPYRIGHT © 2020 THOMAS & HUTTON

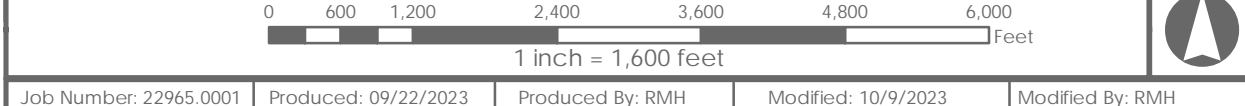


1% +1.41ft SLR Annual Chance Event

Study Basin

Chatham County Line

Effingham County Line



Job Number: 22965.0001	Produced: 09/22/2023	Produced By: RMH	Modified: 10/9/2023	Modified By: RMH
File: Z:\22965.0001\GIS\Map\Exhibits\Floodplain\Exhibits\22965.0001 - Floodplain Working Exhibit 02.mxd Vertical Datum: NAVD83				
Thomas & Hutton compiled the map information from the following sources:				
Data	Source	Date		
Study Basin	Thomas & Hutton	2022/2023		
Floodplain	Thomas & Hutton	2022/2023		
Aerial Imagery	Google Earth	2022		

DISCLAIMER
 Where Thomas & Hutton is cited as the data source, the firm has created or verified the data. For all other sources cited, Thomas & Hutton used the data "as is," has made no independent investigation of the data, and makes no representation as to the accuracy or completeness of the data. Please see each source for available documentation of its respective datasets.
 Copyright © 2018 by Thomas & Hutton.
 No part of this document may be reproduced without written permission from an officer of Thomas & Hutton.

1% +1.41ft Sea Level Rise (SLR) Annual Chance Event Inundation

Exhibit B

Chatham County, Georgia

West Chatham Regional Watershed Study

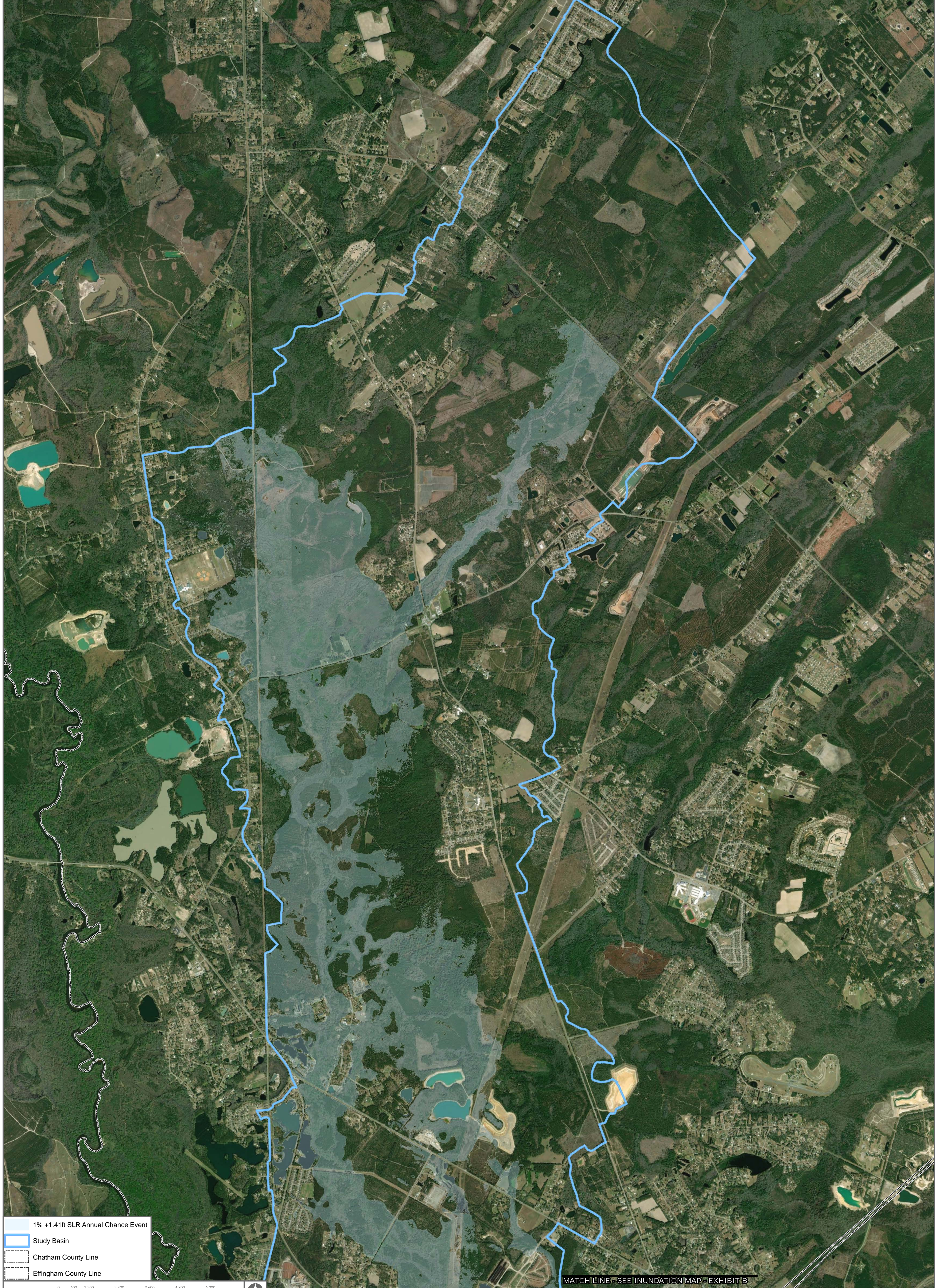


THOMAS & HUTTON

50 PARK OF COMMERCE WAY
 SAVANNAH, GA 31405 • 912.234.5300
 WWW.THOMASANDHUTTON.COM

GEOGRAPHIC INFORMATION SYSTEMS

COPYRIGHT © 2020 THOMAS & HUTTON



1% +1.41ft SLR Annual Chance Event

Study Basin

Chatham County Line

Effingham County Line

0 600 1,200 2,400 3,600 4,800 6,000 Feet

1 inch = 1,600 feet

Job Number: 22965.0001	Produced: 09/22/2023	Produced By: RMH	Modified: 10/9/2023	Modified By: RMH
File: Z:\22965.0001\GIS\Mech\Exhibits\Floodplain\Exhibits\22965.0001 - Floodplain Working Exhibit 03.mxd; Vertical Datum: NAVD88				
Thomas & Hutton compiled the map information from the following sources:				
Data	Source	Date		
Study Basin	Thomas & Hutton	2022/2023		
Floodplain	Thomas & Hutton	2022/2023		
Aerial Imagery	Google Earth	2022		

DISCLAIMER
 Where Thomas & Hutton is cited as the data source, the firm has created or verified the data. For all other sources cited, Thomas & Hutton used the data "as is," has made no independent investigation of the data, and makes no representation as to the accuracy or completeness of the data. Please see each source for available documentation of its respective datasets.
 Copyright © 2018 by Thomas & Hutton.
 No part of this document may be reproduced without written permission from an officer of Thomas & Hutton.

1% +1.41ft Sea Level Rise (SLR) Annual Chance Event Inundation Exhibit C Chatham County, Georgia West Chatham Regional Watershed Study



50 PARK OF COMMERCE WAY
 SAVANNAH, GA 31405 • 912.234.5300
 WWW.THOMASANDHUTTON.COM

GEOGRAPHIC INFORMATION SYSTEMS

COPYRIGHT © 2020 THOMAS & HUTTON

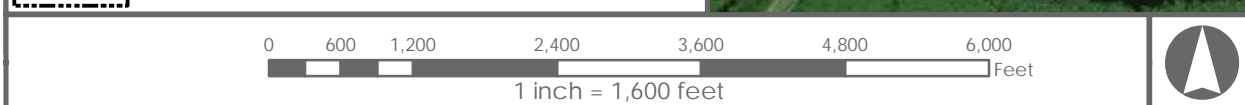


1% +1.64ft SLR Annual Chance Event

Study Basin

Chatham County Line

Effingham County Line



Job Number: 22965.0001	Produced 09/22/2023	Produced By: RMH	Modified: 10/9/2023	Modified By: RMH
File: Z:\22965\22965.0001\GIS\Map\Exhibits\Floodplain\Exhibits\22965.0001 - Floodplain Working Exhibit 01.mxd; Vertical Datum: NAVD83				
Thomas & Hutton compiled the map information from the following sources:				
Data	Source	Date		
Study Basin	Thomas & Hutton	2022/2023		
Floodplain	Thomas & Hutton	2022/2023		
Aerial Imagery	Google Earth	2022		

DISCLAIMER
 Where Thomas & Hutton is cited as the data source, the firm has created or verified the data. For all other sources cited, Thomas & Hutton used the data "as is," has made no independent investigation of the data, and makes no representation as to the accuracy or completeness of the data. Please see each source for available documentation of its respective datasets.
 Copyright © 2018 by Thomas & Hutton.
 No part of this document may be reproduced without written permission from an officer of Thomas & Hutton.

1% +1.64ft Sea Level Rise (SLR)
 Annual Chance Event Inundation
 Exhibit A
 Chatham County, Georgia
 West Chatham Regional Watershed Study



50 PARK OF COMMERCE WAY
 SAVANNAH, GA 31405 • 912.234.5300
 WWW.THOMASANDHUTTON.COM

GEOGRAPHIC INFORMATION SYSTEMS
 COPYRIGHT © 2020 THOMAS & HUTTON

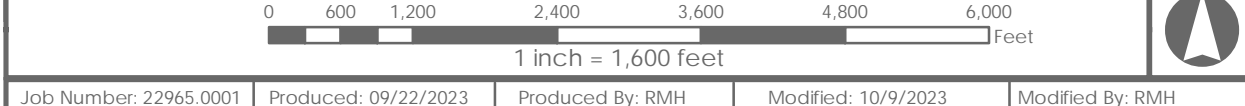


1% +1.64ft SLR Annual Chance Event

Study Basin

Chatham County Line

Effingham County Line



Job Number: 22965.0001	Produced: 09/22/2023	Produced By: RMH	Modified: 10/9/2023	Modified By: RMH
File: Z:\22965.0001\GIS\Misc\Exhibits\Floodplain Exhibits\22965.0001 - Floodplain Working Exhibit 02.mxd; Vertical Datum: NAVD83				
Thomas & Hutton compiled the map information from the following sources:				
Data	Source	Date		
Study Basin	Thomas & Hutton	2022/2023		
Floodplain	Thomas & Hutton	2022/2023		
Aerial Imagery	Google Earth	2022		

DISCLAIMER
 Where Thomas & Hutton is cited as the data source, the firm has created or verified the data. For all other sources cited, Thomas & Hutton used the data "as is," has made no independent investigation of the data, and makes no representation as to the accuracy or completeness of the data. Please see each source for available documentation of its respective datasets.
 Copyright © 2018 by Thomas & Hutton.
 No part of this document may be reproduced without written permission from an officer of Thomas & Hutton.

1% +1.64ft Sea Level Rise (SLR) Annual Chance Event Inundation

Exhibit B

Chatham County, Georgia

West Chatham Regional Watershed Study

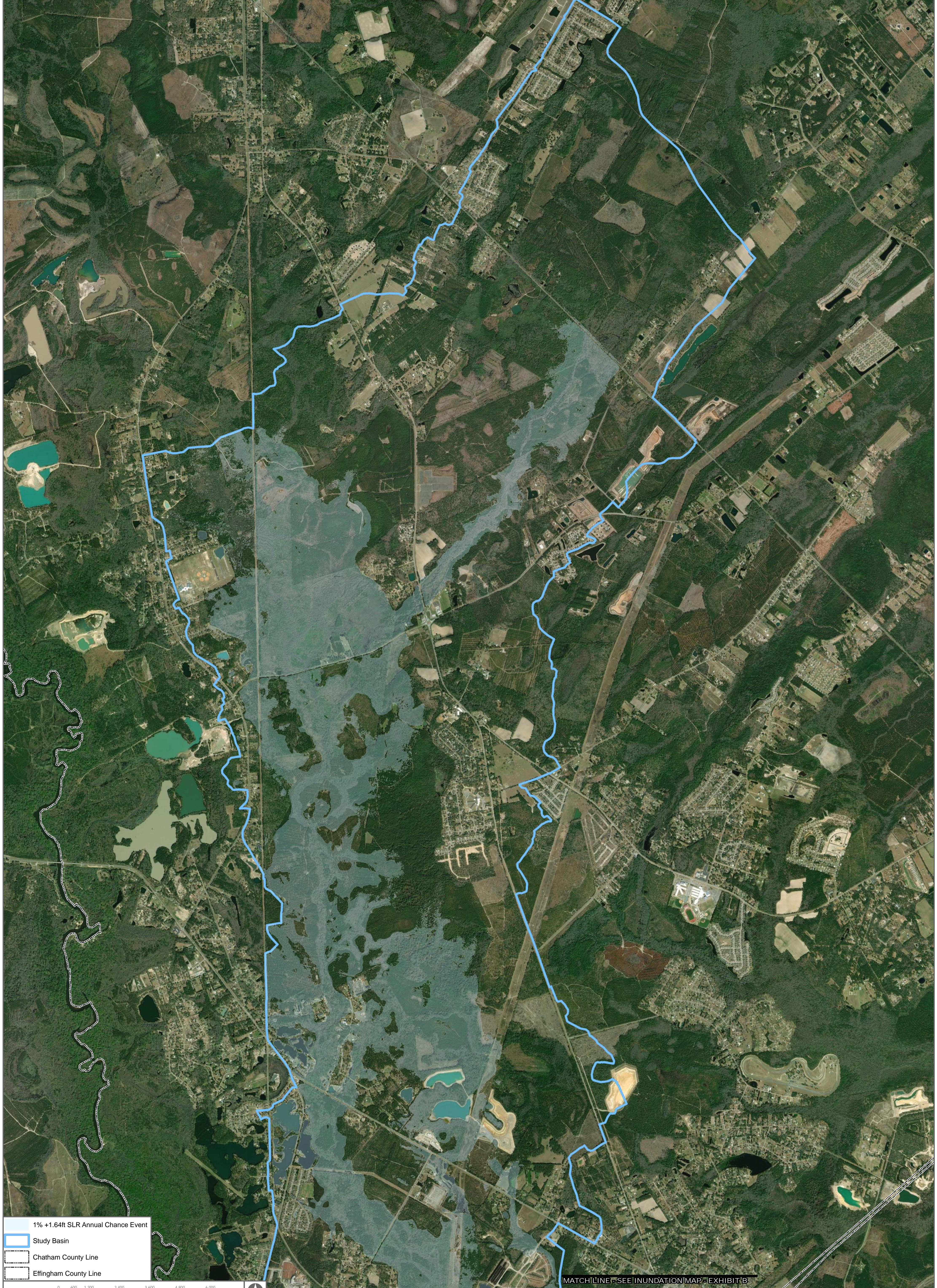


THOMAS & HUTTON

50 PARK OF COMMERCE WAY
 SAVANNAH, GA 31405 • 912.234.5300
 WWW.THOMASANDHUTTON.COM

GEOGRAPHIC INFORMATION SYSTEMS

COPYRIGHT © 2020 THOMAS & HUTTON



1% +1.64ft SLR Annual Chance Event

Study Basin

Chatham County Line

Effingham County Line



Job Number: 22965.0001	Produced: 09/22/2023	Produced By: RMH	Modified: 10/9/2023	Modified By: RMH
File: Z:\22965\22965.0001\GIS\Mech\Exhibits\Floodplain\Exhibits\22965.0001 - Floodplain Working Exhibit 03.mxd; Vertical Datum: NAVD88				
Thomas & Hutton compiled the map information from the following sources:				
Data	Source	Date		
Study Basin	Thomas & Hutton	2022/2023		
Floodplain	Thomas & Hutton	2022/2023		
Aerial Imagery	Google Earth	2022		

DISCLAIMER
 Where Thomas & Hutton is cited as the data source, the firm has created or verified the data. For all other sources cited, Thomas & Hutton used the data "as is," has made no independent investigation of the data, and makes no representation as to the accuracy or completeness of the data. Please see each source for available documentation of its respective datasets.
 Copyright © 2018 by Thomas & Hutton.
 No part of this document may be reproduced without written permission from an officer of Thomas & Hutton.

1% +1.64ft Sea Level Rise (SLR) Annual Chance Event Inundation Exhibit C Chatham County, Georgia West Chatham Regional Watershed Study



50 PARK OF COMMERCE WAY
 SAVANNAH, GA 31405 • 912.234.5300
 WWW.THOMASANDHUTTON.COM

GEOGRAPHIC INFORMATION SYSTEMS
 COPYRIGHT © 2020 THOMAS & HUTTON